

## Serviceable Life

Speedfloor is a composite floor system using both steel and concrete. The two elements must be treated and maintained separately.

## Steel

The rollformed joist is manufactured from steel coated with either 275g/sqm or 450g/sqm of zinc. If the joists are in a clean and dry environment they will require no maintenance. If they are exposed, they will require a minimum amount of maintenance to ensure the expected performance is achieved. Guidelines for this maintenance are:

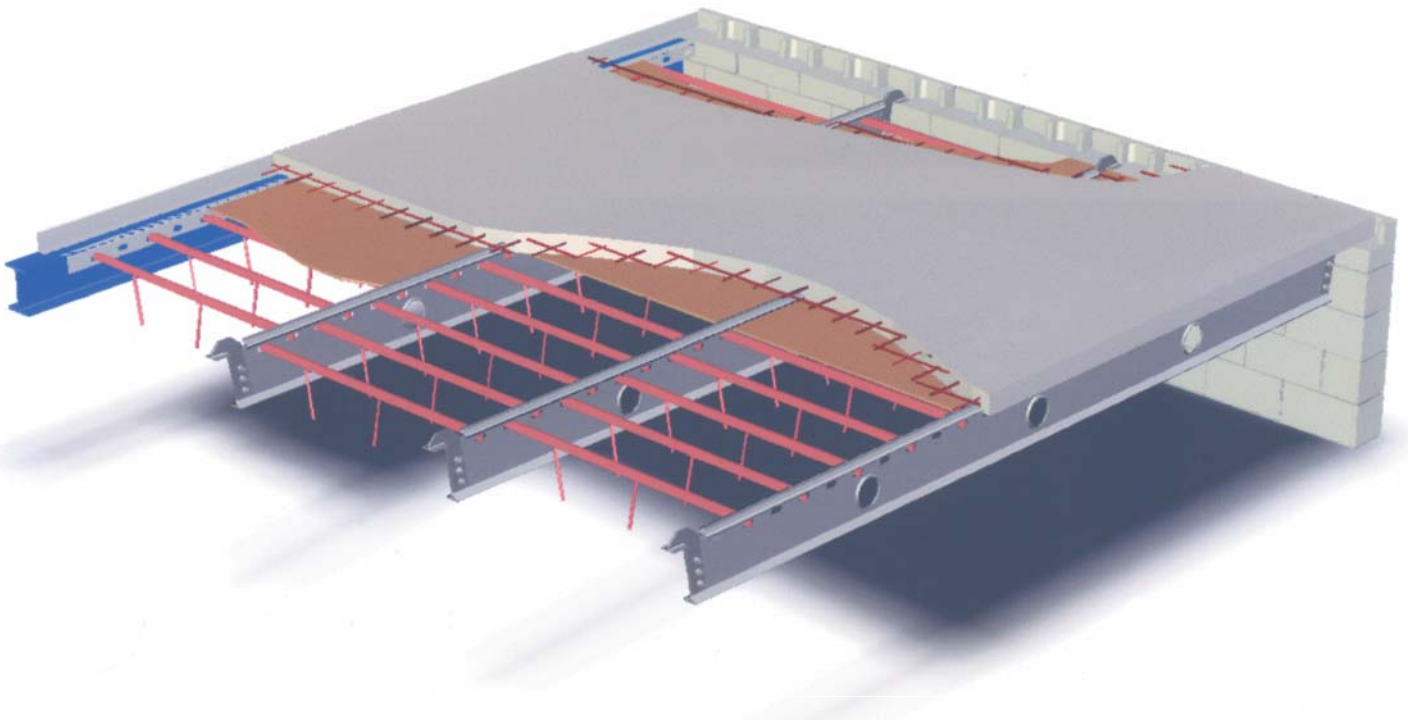
1. Keep surfaces clean and free from continuous contact with moisture, dust and other debris (a 14mPa water-blast every 2 years will suffice).
2. Periodically inspect the joists for any signs of surface corrosion. Remove any by-products of the corrosion by mechanical means and spot prime the exposed steel substrate with an approved steel primer. Repaint the

area using an appropriate paint to manufacturer's recommendations.

## Concrete

Special attention is paid to the concrete mixture and the placement of the concrete in the Speedfloor system to minimise the likelihood of shrinkage cracks occurring during the initial curing period. The slump is specified at 60mm and a super-plasticiser is used to improve workability during placement. In carpark structures an expanding agent is generally used to reduce the effect of shrinkage during the initial cure and a curing compound is used to help control the curing process.

During the service life of the Speedfloor system if any cracks should appear in the concrete floor, they should be filled using an approved epoxy injection system or equivalent, to completely close the crack and prevent moisture ingress.



# SPEEDFLOOR